

352 Jerome Avenue

Piedmont, CA 94610



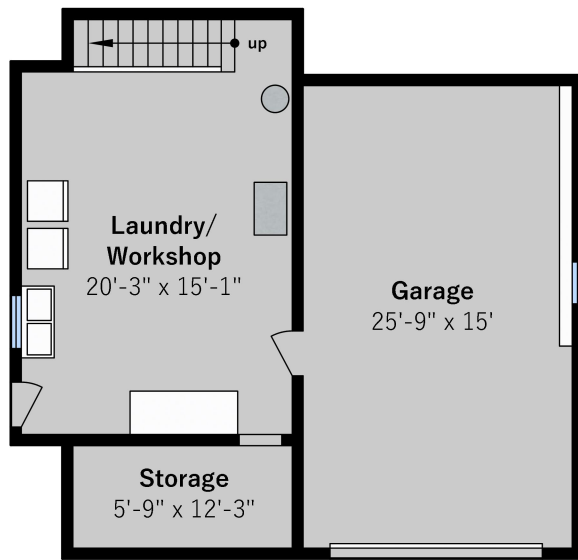
Estimated Total Finished Square Footage: 2,381 sqft

Main Level: 1,522 sqft
Upper Level: 859 sqft

Estimated Total Unfinished Square Footage: 1,256 sqft

Lwr.Storage/Laundry: 472 sqft
Garage: 420 sqft
Upper Storage: 204 sqft
Upper Bonus Room: 160 sqft

All square footage measured from perimeter of exterior walls. Front porch and deck are not included in calculations.
Measured on April 19th, 2019



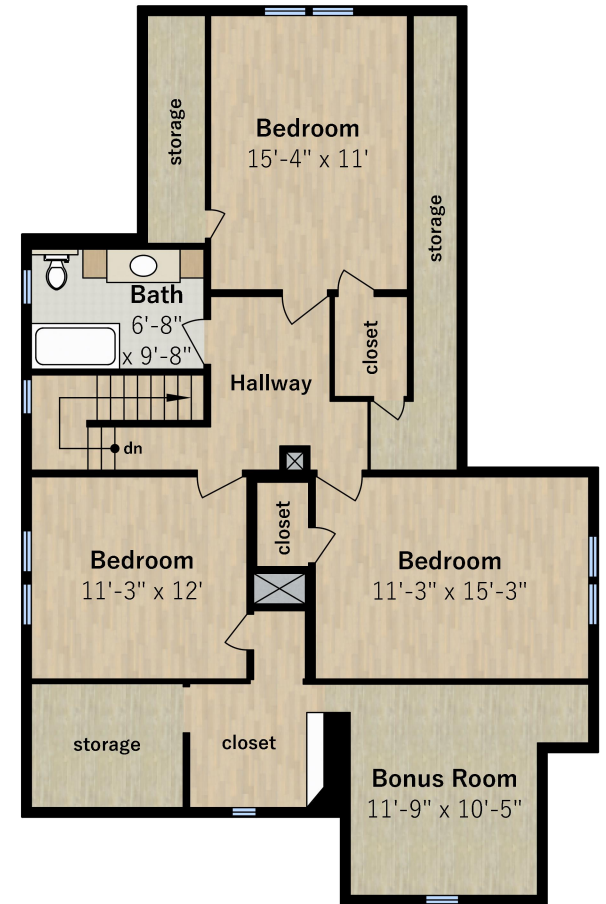
Lower Level

approx. 472 sqft Storage/Laundry
(+420 sqft Garage)



Main Level

approx. 1,522 sqft



Upper Level

approx. 859 sqft
(+204 sqft Storage)
(+160 sqft Bonus Room)

